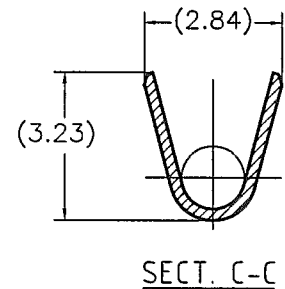
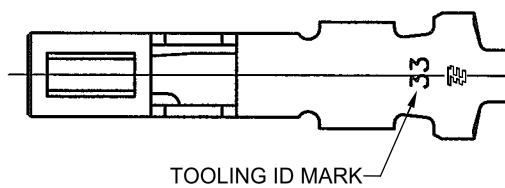
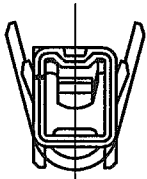
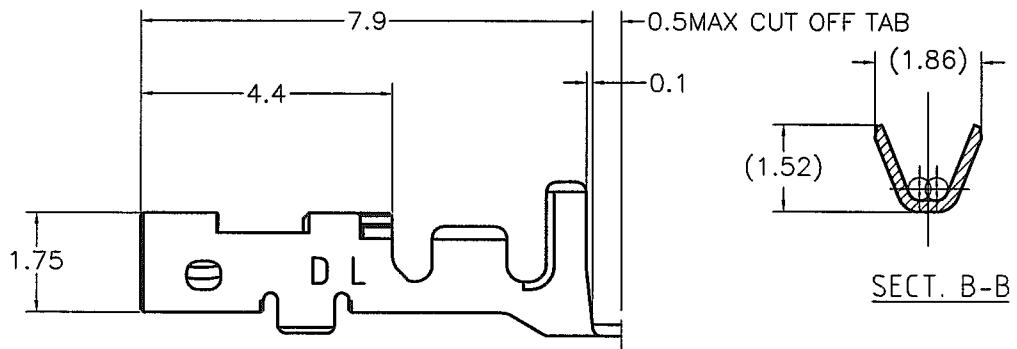
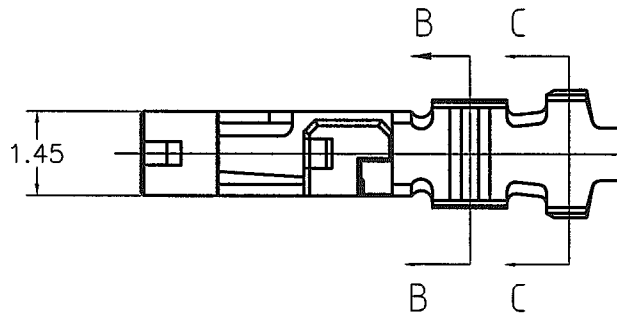


LOC J	DIST —	REVISIONS 変更			
P	LTR	DESCRIPTION	DATE	DWN	APVD
	C	REVISED PER ECR-15-011723	08AUG15	Y.O	E.T



NOTE

1. GENERAL TOLERANCE : $\pm 0.3, \pm 3^\circ$
2. Application REC-HSG is applied to the product of 2.5mm PITCH or more of DYNAMIC D1000SERIES. 2.0mmPITCH cannot be used

THIS DRAWING IS UNPUBLISHED. ALL RIGHTS RESERVED. BY TYCO ELECTRONICS CORPORATION.

1871744-1
PART No.

DIMENSIONS: 单位: 特 mm	DWN T.KUDO	1JUL2005	MATERIAL 材料 PRE-TIN COPPER ALLOY	FINISH 仕上		
	CHK D.MITSUGI	1JUL2005				
	APVD D.MITSUGI	1JUL2005				
	TOLERANCES UNLESS OTHERWISE SPECIFIED: 一般公差 0 PLC \pm 1 PLC \pm 2 PLC \pm 3 PLC \pm 4 PLC \pm ANGLES \pm	PRODUCT SPEC 製品規格 108-78298	NAME 名称 DYNAMIC D1000 SERIES REC CONTACT (L TYPE) TIN PLATE (L/P)			
	APPLICATION SPEC 取付適用規格 114-5377	SIZE A4	CAGE CODE 00779	DRAWING NO 番号 C-1871744	RESTRICTED TO —	
	WEIGHT —	CUSTOMER DRAWING		SCALE 尺度 8:1	SHEET 1 OF 1	REV C